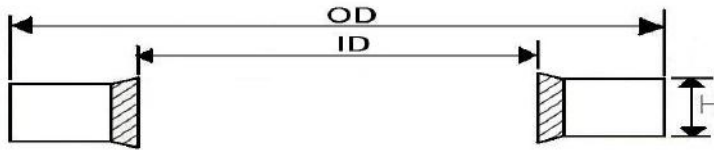
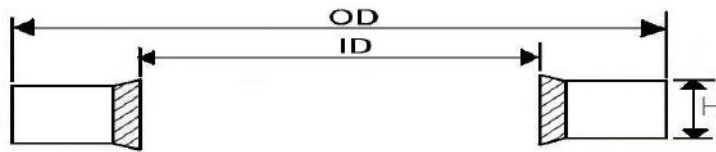


GM500 Series



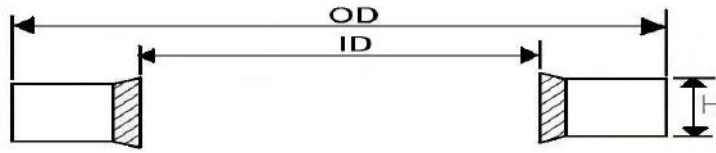
THREAD DIA. 'M'		Products Serial number	ID	OD	H
INCH	B.S.P		$\text{ID} \pm 0.10$	$\text{OD} +0.13/-0$	$\text{H} \pm 0.10$
6BA		#001	3.05	6.35	1.2
4BA		#002	4.12	7.26	1.2
2BA		#003	5.21	8.38	1.2
1/4		#004	6.86	13.21	1.2
1/4		#005	6.99	13.34	1.2
5/16		#006	8.31	13.34	1.2
5/16		#007	8.64	14.22	1.2
40		#008	11.26	18.36	2.0
7/16		#009	11.69	19.05	2.0
9/16		#010	14.86	22.23	2.0
		#010+0.35	14.86	22.23	2.0
5/8		#011	16.51	25.40	2.0
		#011+0.35	16.51	25.40	2.0
11/16		#012	18.16	25.40	2.5
15/16		#013	24.26	33.27	2.5
1+1/8		#014	29.33	36.58	2.5
1+1/4		#015	32.64	41.40	3.2
1+3/8		#016	35.94	44.45	3.2
1+1/2		#017	38.96	47.75	3.2
1+3/4		#018	45.34	57.15	3.2
2		#019	51.69	63.50	3.2
3/8	1/8	#020	10.37	15.88	2.0
1/2	1/4	#021	13.74	20.57	2.0
60		#022	15.83	22.23	2.0
	3/8	#023	17.28	23.80	2.0
3/4		#024	19.69	26.92	2.5
		#024+0.35	19.69	26.92	2.5
13/16	1/2	#025	21.54	28.58	2.5
7/8	5/8	#026	23.49	31.75	2.5
1	3/4	#027	27.05	34.93	2.5
1+1/16		#028	27.82	38.61	2.5
1+3/16	7/8	#029	30.81	38.10	2.5
		#030-2.5	33.89	42.80	2.5

GM500 Series



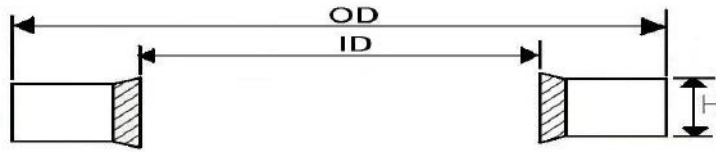
THREAD DIA. 'M'		Products Serial number	ID	OD	H
INCH	B.S.P		$\text{ID} \pm 0.10$	$+0.13/-0$	$\text{H} \pm 0.10$
1+5/16	1	#030-3.2	33.89	42.80	3.2
1+5/16	1	#031	33.89	42.80	2.5
		#032-2.5	42.93	52.38	2.5
1+5/8	1+1/4	#032-3.2	42.93	52.38	3.2
		#033-2.5	48.44	58.60	2.5
1+7/8	1+1/2	#033-3.2	48.44	58.60	3.2
2+1/8		#034	54.89	69.85	3.2
2+1/4		#035	58.04	70.36	3.2
		#036-2.5	60.58	73.03	2.5
	2	#036-3.2	60.58	73.03	3.2
2+1/2		#037	64.39	77.72	3.2
	2+1/4	#038	66.68	79.50	3.2
		#039	76.08	90.17	3.2
	M3.5	#201	4.1	7.20	1.0
	M4	#202	4.5	7.00	1.0
	M5	#203	5.7	9.00	1.0
	M5	#204	5.7	10.00	1.0
	M5.5	#205	6.2	9.20	1.0
	M6	#206	6.7	10.00	1.0
		#206+0.35	6.7	10.00	1.0
	M6	#207	6.7	11.00	1.0
	M6.5	#209	7.1	12.00	1.0
	M6.7	#210	7.3	10.20	1.0
	M8	#211	8.5	13.40	1.0
	M8	#212	8.7	13.00	1.0
		#212+0.35	8.7	13.00	1.0
	M8	#213	8.7	14.00	1.0
	M8	#214	8.7	16.00	1.0
	M8.5	#215	9.3	13.30	1.0
	M10	#216	10.35	16.00	2.0
	M10	#217	10.7	16.00	1.5
	M10	#218	10.7	18.00	1.5
	M11	#219	11.4	16.30	1.5

GM500 Series



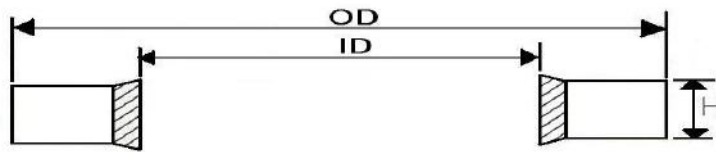
THREAD DIA. 'M'		Products Serial number	ID	OD	H
INCH	B.S.P		± 0.10	+0.13/-0	± 0.10
	M11	#220	11.8	18.50	1.5
	M11	#221	11.8	19.10	1.5
	M12	#222	12.7	18.00	1.5
	M12	#222+0.35	12.7	18.00	1.5
	M12	#223	12.7	20.00	1.5
	M13	#224	13.7	20.00	1.5
	M13	#225	13.7	22.00	1.5
	M13.5	#226	14	18.70	1.5
	M14	#227	14.7	22.00	1.5
	M15	#228	16	22.70	1.5
	M16	#229	16.7	24.00	1.5
	M17	#230	17.4	24.00	1.5
	M17.5	#231	18	24.70	1.5
	M18	#232	18.7	26.00	1.5
	M20	#233	20.7	28.00	1.5
	M21	#234	21.5	28.70	2.5
	M22	#235	22.5	28.00	1.5
	M22	#236	22.7	30.00	2.0
	M22	#237	22.7	30.00	3.0
	M24	#238	24.7	32.00	2.0
	M26	#239	26.7	35.00	2.0
	M27	#240	27.2	36.00	2.0
	M27	#240+0.35	27.2	36.00	2.0
	M28	#241	28.7	37.00	2.0
	M30	#242	31	39.00	2.0
	M33	#243	33.7	42.00	2.0
	M33	#244	34.3	43.00	2.0
	M36	#245	36.7	46.00	2.0
	M39	#246	40	51.00	2.5
	M42	#247	42.7	53.00	3.0
	M48	#248	48.7	59.00	3.0
	M51	#249	52	60.00	3.0
	M52	#250	53.3	64.50	3.0

GM500 Series



THREAD DIA. 'M'		Products Serial number	ID	OD	H
INCH	B.S.P		± 0.10	+0.13/-0	± 0.10
	M60	#251	60.7	73.00	3.0
	M3	#301	3.6	7.50	1.0
	M4	#302	4.6	9.00	1.0
	M5	#303	5.6	10.00	1.0
	M6	#304	6.6	11.00	1.0
	M6	#305	6.85	13.27	1.3
	M6	#306	7	11.40	1.0
	M8	#307	8.6	13.00	1.0
	M10	#310	10.7	17.00	1.5
	M11	#312	11.8	18.10	1.5
	M12	#313	12.7	19.00	1.5
	M13	#315	13.8	20.10	1.5
	M14	#316	14.7	21.00	1.5
	M16	#317	16.7	23.00	1.5
	M18	#320	18.7	27.00	2.0
	M20	#321	20.7	29.00	2.0
	M21	#323	21.7	30.00	2.0
	M22	#324	22.7	31.00	2.0
	M23	#325	23.7	32.00	2.0
	M24	#326	24.7	33.00	2.0
	M26	#327	27	35.30	2.0
	M27	#328	27.7	36.00	2.0
	M28	#329	28.6	36.00	2.0
	M28.5	#330	29.2	37.50	2.0
	M30	#331	30.7	39.00	2.0
	M33	#332	33.7	42.00	2.0
	M36	#333	37	48.00	2.5
	M39	#334	40	51.00	2.5
	M42	#335	43	54.00	2.5
	M45	#336	46	57.00	2.5
	M48	#337	49	60.00	2.5
	1/8	#510	10.4	59.26	1.2
	1/4	#511	13.85	61.52	1.2

GM500 Series



THREAD DIA. 'M'		Products Serial number	ID	OD	H
INCH	B.S.P		± 0.10	+0.13/-0	± 0.10
	3/8	#512	17.35	63.79	1.2
	1/2	#513	21.65	66.05	1.2
	3/4	#514	27.3	68.31	1.2
	1	#515	34.2	70.58	2.0
	1 1/4	#516	42.8	72.84	2.0
	1 1/2	#517	48.7	75.11	2.0
	2	#518	60.5	77.37	2.0
	1/16	#519	8.3	79.64	1.2